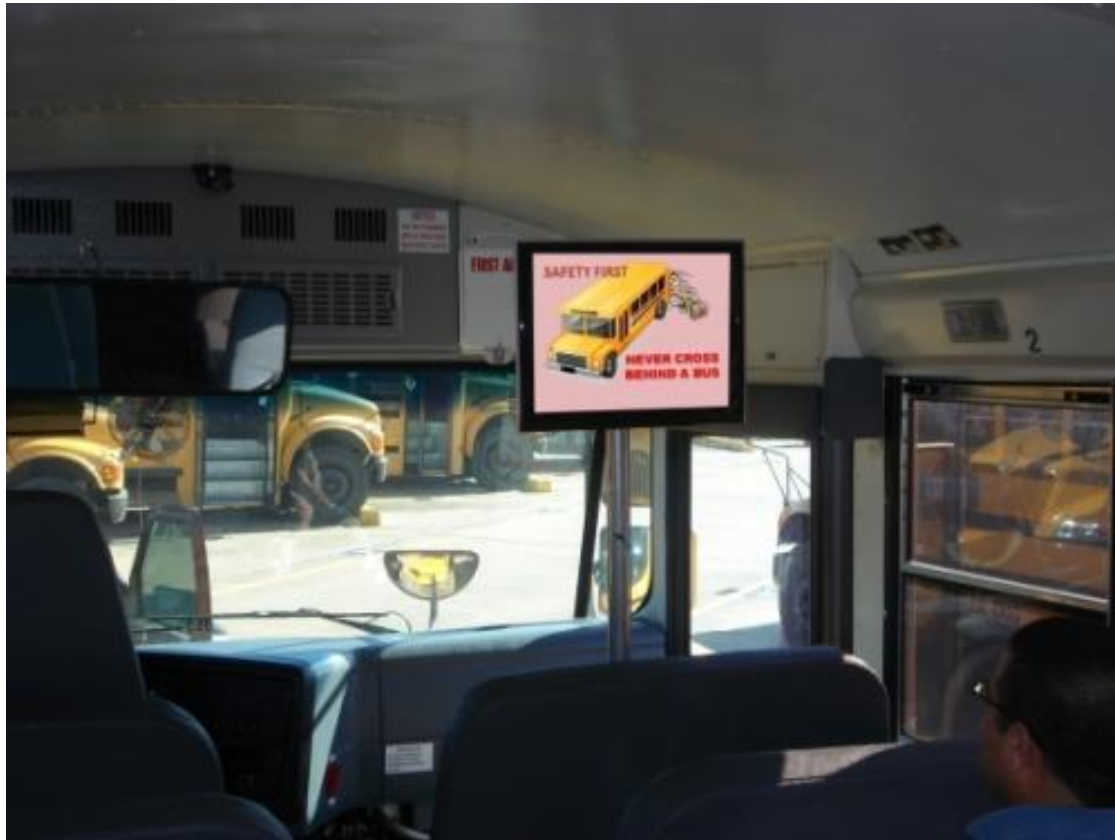


Bus-Ed-Safe-TV (BEST)



Solving problems using AMP

Driver discipline
Student discipline
Parent discipline
Safety



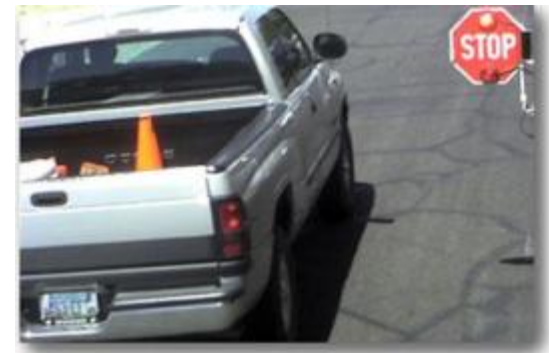
Summary of AMP's current features

A Advanced M Mobile P Processor



- High speed , secure WiFi based access to real time and recorded video.
- Windows based

Stop arm camera to reduce stop arm violations



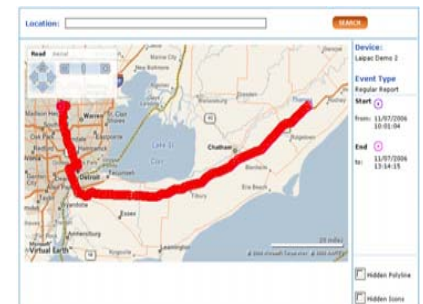
AutoCheck Reporting

Event ID	Event Type	Event Date	Event Time	Event Location	Event Status	Event Description
1001	Regular Report	11/10/04	10:00:00	1000 Main St	Completed	Regular report for event 1001
1002	Regular Report	11/10/04	10:05:00	1000 Main St	Completed	Regular report for event 1002
1003	Regular Report	11/10/04	10:10:00	1000 Main St	Completed	Regular report for event 1003
1004	Regular Report	11/10/04	10:15:00	1000 Main St	Completed	Regular report for event 1004
1005	Regular Report	11/10/04	10:20:00	1000 Main St	Completed	Regular report for event 1005

Touch-screen capable for easy and accurate trip reporting



GPS enabled reports and maps



What is BEST?

Bus-Ed-Safe-TV

BEST is a new AMP feature

AMP stores multimedia content

Content is automatically downloaded via wireless in parking lot.

Multimedia content is played on the LCD while students ride the bus.

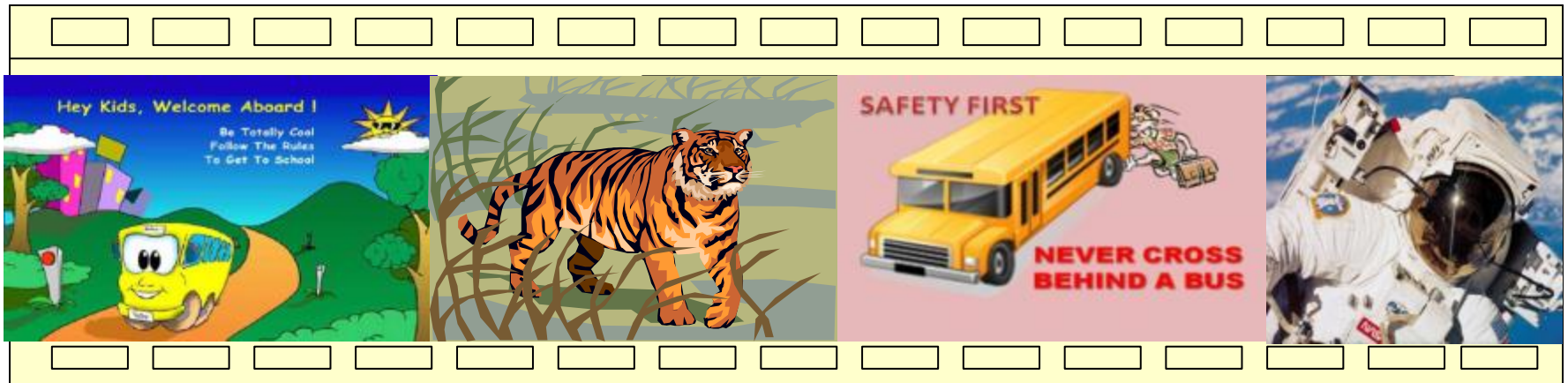
LCD is mounted behind the driver and is not viewable by the driver.



What's the Content ?

Ideal content for BEST

- Safety related videos / messages
- Edu-taining videos for all ages
- School related announcements
- Content provided by school district's television station



Sample Safety videos / messages



Why promote safety ?

“It’s a no-brainer”



- 52.4 million student journeys daily
- 9.322 billion student journeys annually
- 2.5 times more than all of the nation's public transit.
- Children learn by repetition ?
- Bus evacuation training
- Similar to airline repetitive safety information



Fact

School districts grapple with school bus disciplinary problems

Disciplinary problems range from

destruction of property
kids fighting kids
name calling
ganging up
fist fights
spitting
slapping
pulling
pushing
cursing



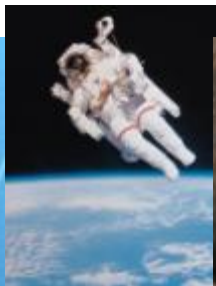
School Bus



What is EDU-TAINING Content ?

EDUcational & enter TAINING content

Reduces Disciplinary Problems
Increases Bus Safety
Educates & **Entertains**



Content that we DON'T want

Direct commercial ads that parents can object to and are not good for kids.

Violence

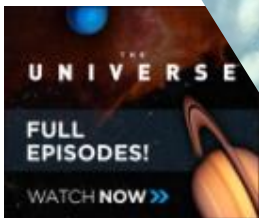
Sexually explicit material

Pure entertainment

Ideal partnerships

Content / video providers

National Geographic
Discovery Channel
History Channel
NASA Space Center
The Learning Channel
How its made
Travel Channel
Made in America
School District TV station
Quiz shows
Sports



Funding / sponsorship partners

Safety grants and charities
Educational grants and charities
Kid / education related charities
Environment related charities
Other Non-Profit initiatives
Commercial sponsorships like health and fitness companies or sports equipment etc....





So Far.....

Concept has been shared with the following mentors

Northside ISD – Charles Rentschler - Executive Transportation Director

Garland ISD – Brian Abbett - Transportation Director

Idea Public Schools – John Jacobs – Transportation Director

Mission ISD – Carlos Lermer – Transportation Director



Response:

Positive

To be presented to school district's boards for approval.



Phase I partnerships

- Looking for Content Providers for pilots with School Districts
- AdComp has existing AMP installations in about 40 School Districts in Texas
- School districts with AMP already installed just need the addition of the LCD with software – low cost.
- Looking for grants, donations or sponsors to get the project started.

With a Video/Audio
Monitoring System

FIRST AID



**Toughened
26" LCD
mounted
securely in
bus connected
to AMP**

BEST

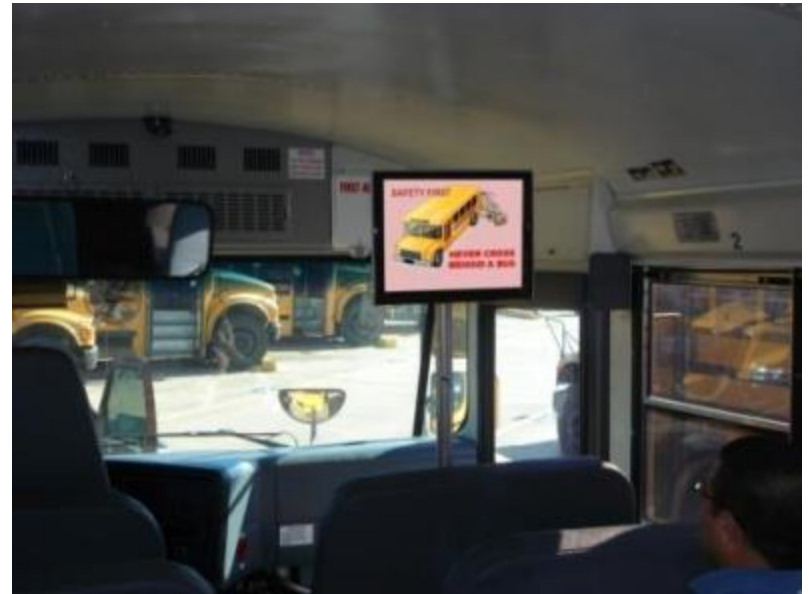
Bus-Ed-Safe-TV

Addresses three major concerns

Safety

Discipline

Education



EDU-TAINING content with engaging safety messages. Content updated daily through WiFi

Phase II

Large scale deployment of BEST

- 25 million students ride over 400,000 school buses twice daily.
- School buses transport students over 4 billion miles annually

BEST

smarter and safer kids... one bus at a time.

Interested in participating ?

Please contact:

Mansur Plumber

AdComp Systems Inc. (Transport Track)

www.adcompsystems.com

mansur@adcompsystems.com

Cell: 972-877-4070, Office: 877-275-7694 ext 201

